

Figure 12.38
Assembly diagram for a hidden bayonet catch.

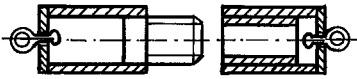


Figure 12.39
Cut-away diagram of a basic threaded catch.

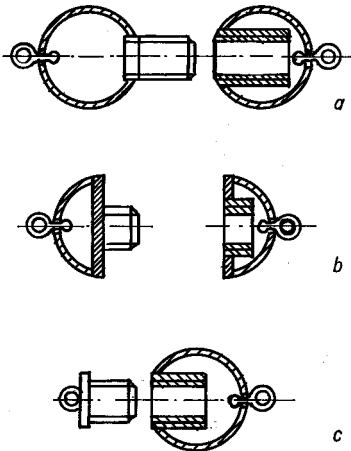


Figure 12.40
Examples of threaded catches hidden inside hollow forms.

which a bead has been drawn. This wire will be bent up to make a jump ring and of course is free to rotate independent of the catch. A jump ring connection that was fixed to the catch would cause the necklace to wind up as the catch was being closed.

A thick-walled tube is threaded with a tap and die, cut to the correct length, and soldered into the outer tube. Obviously care must be taken in selecting these tubes to ensure a tight fit. A rod of the correct diameter is selected and tapped with matching threads. When the pieces are confirmed, a short length of the threaded section is sawn off and soldered into the

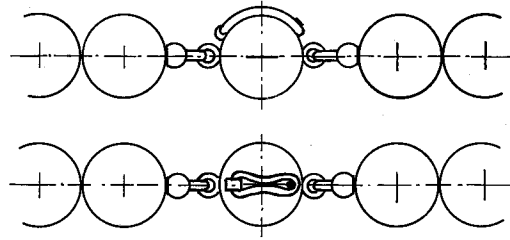


Figure 12.41
Side and top view of a practical but inelegant safety catch.

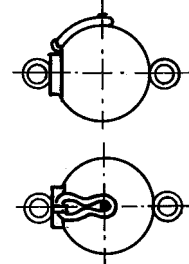


Figure 12.42
Safety catch on a single sphere.

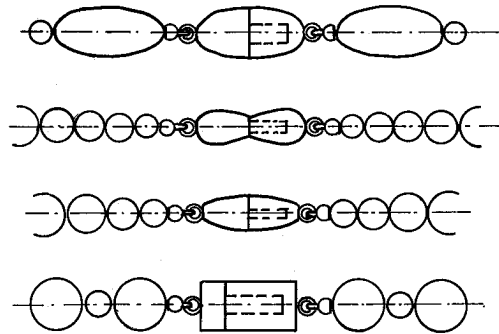


Figure 12.43
Threaded clasps can be designed to blend in to a wide range of shapes.

other piece of the catch. It is useful to bevel the tip of the threaded section slightly to make it easier to engage the threads.

Many variations can be worked on the threaded closure, a few of which are seen in figure 12.40. In the first example, two spheres are purchased or made by soldering together two dapped domes. A tube is threaded on its interior walls with a die and a matching rod is cut with threads to make a tight fit. These are then soldered into position as shown at (a).

In the case of 12.40b, a single sphere is made to enclose the catch. One dome is decked and a thread-